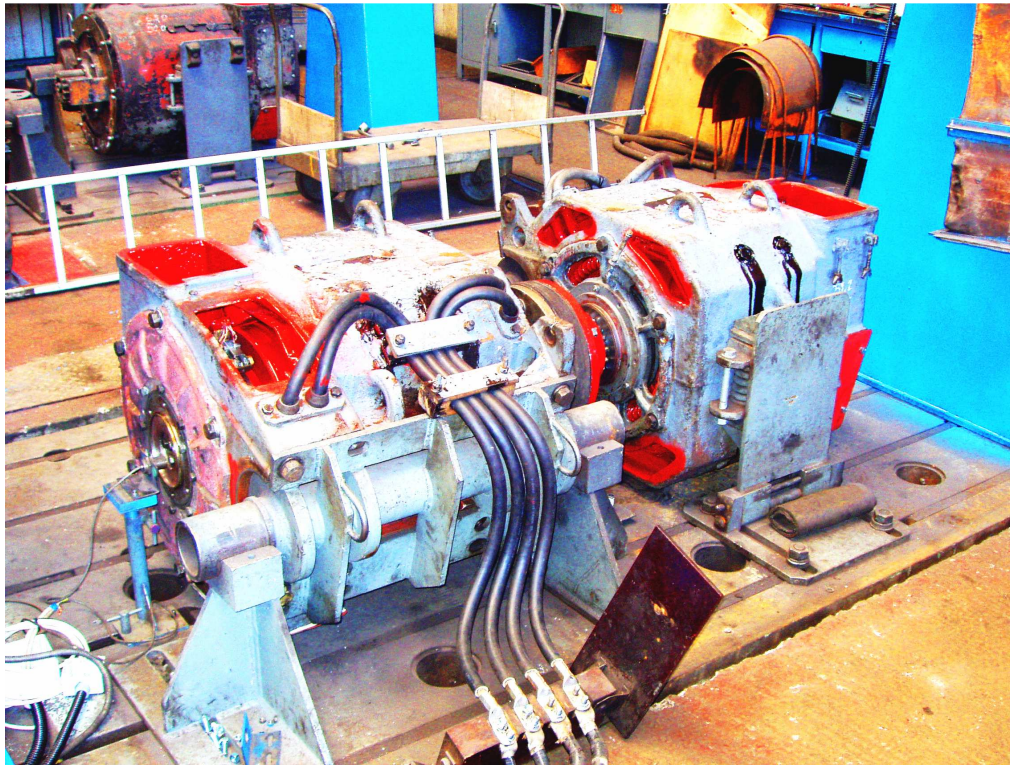


Automated testing stations of traction motors combine a comprehensive set of prescribed tests. The output of the measuring procedure is a test report.

MEASURED VALUES

- Voltage AC/DC
- Current AC/DC
- Vibrations
- Resistance
- Rotation speed
- Temperature



Testing pairs of traction motors. The record of the report is in a PDF file format, shared on the Ethernet. A camera system to transmit commutator sparking.

ADVANTAGES AND ABILITIES OF AUTOMATED MEASURING

- Safe operation
- Reliability
- Elimination of operating errors
- Work efficiency and automation
- Storage, sharing, and printing of data and reports
- Extensibility